



Yuba Sutter

# Valley Quilt Guild

[www.valleyquiltguild.com](http://www.valleyquiltguild.com)

June 2015

## *Cooky crumbs . . .*

Summer sure came with a vengeance! No time to get acclimated. I hope all of you who are taking vacations have a wonderful time.

Thank you to all of you wonderful ladies who volunteered to be on the board this past year. I really appreciate all of your help and ideas. And thank you to the new board for the coming year.

We really need all of you to volunteer and work a shift at the Yuba-Sutter Fair this year. There will be a

sign-up sheet at the next guild meeting. If you won't be at the meeting give Diane Leighton a call 673-7044 and she will be happy to have you fill a spot. Diane has graciously volunteered to do the Fair Staffing. Just in case you forgot, the reason we do this is: they give us money off the rent of the building for our Quilt Show. We would have to do another fund raiser to cover those monies. PLEASE HELP.

Our first Board meeting of the new

year will be July 8 @ 3:30 p.m. in our new location 1624 Starr Drive, Yuba City. If you are a board member please be ready to present your budget for the next year.

Thank you to everyone for this past year, and I hope next year will be as successful.

Cooky Amarel



## *Yuba Sutter Fair*

Members, it is very important that you volunteer to work two hours during the fair. We receive a \$1000.00 credit towards the quilt show rental because we help out at the fair!

Diane Leighton is the chairman for this and you can contact her to sign up or sign up with Valerie Wilson at

the June meeting.

The fair runs from Thursday July 30 through Sunday, August 2. We work on Thursday from 4 Pm - 10 Pm and the rest of the days from 1 Pm to 10 PM. You may also call Valerie or Diane.

See fair entry information and entry

form in this newsletter. Please copy for form and submit it by July 1.

Valerie Wilson



**June 24th**  
**Jan Soules**  
**"Spectacular Borders"**

Doors Open at 6:00pm

Meeting begins at  
7:00pm



## **Sew So Shop**

**Jim and Nicky Davis**

**769 Plumas Street**

**Suite A**

**Yuba City, Ca 95991**

**[sewsoshop@att.net](mailto:sewsoshop@att.net)**

**(530) 742-7626**

**Innova Longarm and  
Janome Dealer**

## *Yuba Sutter Fair Entry Information*

### **QUILT SHOW**

**Entry Fee: \$2.00 per entry**

See Competitive Still Exhibit Schedule (page 1) for receiving/pick-up dates & times.

**Thank you to the VALLEY QUILT GUILD for the sponsorship of Division 35**

#### **How to Enter**

- Use a **Still Exhibit Entry Form (check Adult)**.
- Xerox copies are acceptable.
- American System of Judging
- Entry forms must be turned in or mailed to the Fair Office no later than 5 pm on July 1, 2015.
- Any entry form received or postmarked after July 1st or before July 8th will be subject to a \$25 late fee. No entries will be accepted after 5 pm on July 8, 2015.
- All entries must have been home produced by the exhibitor within one (1) year of July 30, 2015 to be eligible for entry, judging and exhibit.
- Please have your name; address and telephone number sewn in an unobtrusive seam in the garments and in lower left hand corner on back of quilt.
- If you do not find a class for your entry in those listed under the Division where it should be entered, enter the item under Any Other.
- The Judge has the authority to transfer any entry from one Division/Class to another. The Judge's decision is final.

### **SENIOR QUILT**

**BEST OF SHOW: AWARDED TO ONE QUILT FROM THE FIRST PLACE WINNERS IN EACH ELIGIBLE CLASS (ONE AWARD ONLY) \$50.00**

#### **CASH AWARDS:**

**First: \$15.00      Second: \$10.00      Third: \$5.00**

Honorable mention (ribbon only)



## *Yuba Sutter Fair Entry Information, continued*

### **DIVISION 40-SENIOR-QUILT (SINGLE PERSON QUILT)**

#### **Class**

- 1 Large Quilt-measures 71" or more on the longest side. Hand or machine pieced and hand quilted by maker.
- 2 Large Quilt-measures 71" or more on the longest side. Machine pieced and machine quilted by maker.
- 3 Large Quilt-measures 71" or more on the longest side. Machine pieced and hand or machine quilted by another.
- 4 Large Quilt-measures 71" or more on the longest side. Group quilt.
- 5 Medium Quilt-Measure 48" to 70" on the longest side. Hand or machine pieced and hand quilted by maker.
- 6 Medium Quilt-measures 48" to 70" on the longest side. Machine pieced and machine quilted by maker.
- 7 Medium Quilt-measures 48" to 70" on the longest side. Machine pieced and hand or machine quilted by another.
- 8 Medium Quilt-measures 48" to 70" on the longest side. Group quilt.
- 9 Wall Quilt-measures less than 48" on the longest side. Machine pieced and hand or machine quilted by another.
- 10 Wall Quilt-measures less than 48" on the longest side. Hand or machine pieced and hand quilted by maker.
- 11 Wall Quilt-measures less than 48" on the longest side. Machine pieced and machine quilted by maker.
- 12 Wall Quilt-measures less than 48" on the longest side. Group quilt.
- 13 QUILT-ANY OTHER

### **JUNIOR-QUILT NO ENTRY FEE**

#### **RIBBONS ONLY**

First place, Second place, Third place and Honorable mention  
**NO BEST OF SHOW**

### **DIVISION 41-JUNIOR-QUILT**

#### **Class**

- 1 Quilt/Any (Ages 5-19)

### **QUILT BLOCK CONTEST NO ENTRY FEE**

#### **CASH AWARDS:**

1<sup>st</sup> - \$30.00    2<sup>nd</sup> - \$25.00    3<sup>rd</sup> - \$20.00    4<sup>th</sup> - \$15.00    5<sup>th</sup> - \$10.00    6<sup>th</sup> - \$5.00

#### **How to Enter**

- Enter as many 'blocks' as you wish.
- Contest is open to all Yuba and Sutter County residents and Valley Quilt Guild members.
- Decisions of the Judges will be final.
- American System of Judging
- Exhibitor must complete entry form at time of delivery of the Quilt block.



## *Yuba Sutter Fair Entry Information, continued*

### **THEME: 'WHERE FUN GROWS'**

- The quilt block must measure 12 ½" x 12 ½" to be eligible for competition.
- Blocks that do not square up to 12 ½" will be disqualified.
- Blocks must be made from 100% cotton fabric.
- Use any technique or pattern.
- Do not pre-quilt or back the block.
- Deliver your quilt block to the Home Arts Quilt table by 3:30 pm on Saturday, August 1, 2015.
- Have your name and address applied to the back of the block.
- Quilt blocks will be on display for the remainder of the fair.
- The entries will not be returned.
- A quilt consisting of these blocks will be displayed and raffled at next year's fair.

### **DIVISION 42-QUILT BLOCK CONTEST**

#### **Class**

1 Quilt Block

## **ENTRIES CLOSE 5 PM JULY 1, 2015**

### **Discounted Admission**

Present your entry tag at the Yuba-Sutter Fair office before 5 pm Wednesday, July 29, 2015 and purchase a 2015 fair general admission pass for only \$5 per day! No purchase limit.



# Yuba Sutter Fair Entry Form

Use a separate Entry Form for Each Category: Photography, Floriculture, Clothing, Baked Goods, etc. Print in landscape design! Photo copies of blank entry forms are acceptable.



## COMPETITIVE STILL EXHIBIT Entry Form

Entries Close @ 5 pm on July 1, 2015

☐ YOUTH ☐ ADULT

Youth's Age: \_\_\_\_\_ Birth Date: \_\_\_\_\_

Entry # Leave Blank Office use ONLY	Division Number	Class Number	Brief Description of Entry (or Title)	Entry Fee
1				
2				
3				
4				
5				
6				
7				
8				
9				
10				

The undersigned states herewith, that he/she is the recognized supervisor of the project of which the above entries are a part, that to his/her personal and actual knowledge the statements regarding the same as true, and he/she further states that he/she has read and has full understanding of the rules and regulations governing the same and agrees to be governed by them. The exhibitor is entered as:

Club, Chapter, School or None

Signature of Authorized Instructor/Leader

Phone #

Signature of Parent of Guardian

Date

The undersigned has read, understands and agrees to abide by the rules as so stated in the Exhibit Guide and the California State rules governing competition at California State Fairs. The Exhibitor and the exhibitor's agent and representative (Yuba Sutter Fair) and the State of California and its agents and representatives (California State Fair) hereby agree to the following reasonable attorney fees) arising out of any injury or damage which is caused by, arises from, or is any way connected with participation in the program or event, excepting only that caused by the sole active negligence of the Association. The Association shall not be responsible for any accidents or losses that may occur to any of the exhibitors or exhibits at the Fair. The exhibitor (or parent/guardian of a minor) is responsible for any injury or damage resulting from the exhibitor's participation in the program or event. This includes any injury to others, to the exhibitor or the exhibitor's property. By signing this form you agree that any photographic or video images or likeness of you can be used by the Association for promotional purposes.

Printed name of registered and/or legal owner

Written signature of owner or agent

Address:

City: \_\_\_\_\_ State: \_\_\_\_\_ Zip: \_\_\_\_\_

Phone: \_\_\_\_\_ Email: \_\_\_\_\_

### Total Entry Fees:

Mail form & fees to:  
Yuba-Sutter Fair  
442 Franklin Ave  
Yuba City, CA 95991

Hand Delivery:  
442 Franklin Ave  
Yuba City, CA 95991

Checks payable to:  
Yuba-Sutter Fair

Fair Office Hours:  
Mon.-Fri., 8 am - Noon  
& 1-5 pm

Telephone:  
(530) 674-1280



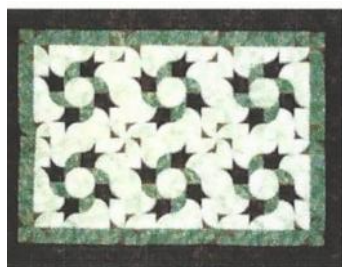
## Programs and Speakers

Our May meeting was with Lynn Wilder. She gave a very nice lecture. Her math class the next day was fantastic. We learned a lot about how to make blocks bigger or smaller. The best thing was how to make them more exact. Light bulbs were going off all day. Much easier than you would of thought. She does offer a second and different class on Patchwork Math. So if you are interested please let us know.

In June we will have Jan Soules. She will give a lecture on Spectacular Borders. There will be a class on Thursday the 25th at the Sew So Shop. She will be doing a Kaleidoscope quilt. There will be no pre cutting of fabric before class. She says it's easy and will not take up too much time in class.



In July we will have Lyn Mann. She will present Confessions of a Skewed up Quilter. Her class the next day is Throw Traditions a Curve. You will pick from four of her patterns. Below are two of the four choices.



After several of you asked if we could do the sample quilt I showed at the meetings. I talked with Lyn and we will be able to do that quilt also. Here's that quilt.



**Starting August 1st our class fees will be \$30.00.** That means starting with Linda Ballard's class and forward all classes are \$30.00.

Our August speaker is our very own Diane Steele. Her lecture will be on Round Robins, Block exchanges and Block Challenges. So mark your calendars, so in the next few months we could be showing group quilts.

Then on Friday August 14<sup>th</sup>, Saturday the 15<sup>th</sup> Linda Ballard will be here for a class. **Our class this**

**time will be UFO'S.** You can do your unfinished quilts from Linda's, or any UFO you would like. So if you have one that's given you trouble, Linda can help you.

The Sew So Shop has the fabric requirements for our workshops. The information is in a binder at the front desk. So when you are in the Shop to purchase fabric for a particular workshop project, Jim, Nicky or Veronica will be able to assist you. Stop by and welcome Wanda and Carolyn to the staff they will glad to assist you too. (They have June and July class supply list now)

As always, please contact Claire regarding any speakers you might wish to have visit us and please contact Cheryl regarding workshop information.

Claire Poole  
clairepoole@yahoo.com  
671-2165

Cheryl Gaines  
rcgaines@syix.com



## Upcoming Quilt Shows

<b>June 27 &amp; 28</b>	<b>Annual Fort Bragg Quilt Show</b> Dana Gray Elementary School 1197 Chestnut St Fort Bragg, CA Sat 10-5, Sun 10-4	<b>Oct 3 &amp; 4</b>	<b>Falling Leaves Quilt Show</b> Lake County Fair Grounds 401 Martin St Lakeport, CA Sat 10-5, Sun 10-4
<b>Sept 11-13</b>	<b>Gold Bug Quilt Show</b> Cameron Park Comm. Center 2505 Country Club Dr Cameron Park, CA Fri & Sat 10-5, Sun 10-4	<b>Oct 24</b>	<b>Great Petaluma Quilt Show</b> Petaluma Community Center 320 N. McDonell Ave Petaluma, CA Sat 10-4
<b>Sept 12&amp;13</b>	<b>Harvest of Quilts</b> SES Portuguese Hall 10428 E. Stockton Blvd Elk Grove, CA Fri 10-5, Sun 10-4	<b>Nov 7 &amp; 8</b>	<b>Annie's Star Quilt Guild</b> Silver Dollar Fairgrounds Chico, CA Sat 10-5, Sun 10-4
<b>Sept 19</b>	<b>Georgetown Outdoor Quilt Show</b> Georgetown Part on Harkness St Georgetown, CA Sat 10-4	<b>Nov 7 &amp; 8</b>	<b>Brownsville Lutheran Church</b> Mountain Quilt Guild Ponderosa Community Center 17103 Ponderosa Way Brownsville, Ca Sat 10-4, Sun 10-3
<b>Sept 19 &amp; 20</b>	<b>Sutter Buttes Quilt Guild</b> SYO Building 7780 Butte House Rd Sutter, CA Sat 10-4, Sun 10-3	<b>Nov 20-22</b>	<b>River City Quilters' Guild</b> Scottish Rite Temple 6151 H Street Sacramento, CA Fri & Sat 10-5, Sun 10-4

## 310 Club and Totally Me

New members of the 310 Club will be receiving their pins and certificates at the June meeting. If you have quilts that have been measured but you have not submitted the application cards you will not receive a pin or certificate.

In the future no quilts will be measured for 310 verification unless accompanied by a completed 310 Club application. Totally Me quilts will not

be recognized unless a Totally Me Club Application is submitted to the 310 Club chairman.

Applications for both clubs are available in this newsletter or on the Valley Quilt Guild website  
[www.valleyquiltguild.com](http://www.valleyquiltguild.com)

New Members to the 310 Club are:  
Kim Buzolich (1)  
Heather Chambers (1)

Shirley Miller (2)  
Joann Thomas (1)

New Member to the Totally Me Club is Shirley Miller (1).

Jody Ohrt



## Community Service

Wow! Thank you to everyone who took quilts home to quilt for Community Service. I had 15 quilts and they were all gone before our break! I also had 170 Christmas stockings that needed to be made and they also were all checked out, as were several quilt kits! Every month, the members of this guild amaze me with their acts of kindness! It is a pleasure knowing and working with you! Thanks to my sewing group, The Coop Group\*, I will now have more quilts available at the next meeting that will need to be quilted.

A big THANK YOU to those that have made quilts or donated fabric:

Cooky Amarel\* – 1 quilt top and put together several quilt kits

Beryl Burtis – 2 completed quilts

Dianne Deaver – 2 completed quilts

Cheryl Gaines – 1 bolt white on white fabric

Wanda Horn – 1 quilt top

DeRay Jensen\* – Put together several quilt kits

Shirley Jensen\* – Put together several quilt kits

Craig Jones – Binding on 1 quilt

Karen Litvinchuk – Quilting on two quilts

Nicki Lura – 3 completed quilt

Pat May - Fabric

Clara Midwood – 1 walker bag

Mary Overton\* – 2 quilt tops and put together several quilt kits

Claire Poole\* – 1 quilt top and put together several quilt kits

Lucy Prall – 2 quilt tops

Margaret Reheman\* – Put together several quilt kits

Sandi Schuster – 1 quilt top

Delaina Watson – Binding on two quilts

Leann Weldon – 1 completed quilt

Valerie Wilson\* – Binding on one quilt

I have lots of fabric or batting if you need any for community service quilts! Please call me at 530-701-5410 and let me know what you need.

Dee Jagerhorn

\*Denotes Coop Group members



## Helpful Hints from Alyce

✓ Wet the eye of the needle instead of the thread. It makes it easier for the thread to slide through the eye.

✓ Never store fabric or quilts in plastic bags or boxes for any length of time, as it sweats and will eventually weaken and/or rot the threads of the fabric. Use a pillow case or a sheet for storing. This also

applies to Cedar Chests or any unpainted shelves. Wood gives off a methane gas that also rots fabric. The old myth of cedar as a preservative is not true.

✓ Instead of a traditional binding, take the extra time to make Prairie Points for the border. It's a great way to use up the scraps from the quilt front.

✓ When cutting curved piecing, try using a 28mm rotary blade instead of the more common 45mm. It will be easier to maneuver around the curves.

✓ Try sewing your binding on the back of the quilt, then turn it to the front and use a decorative stitch to sew it down. It looks great on children's quilts.



## *Board Meeting Minutes*

### VALLEY QUILT GUILD BOARD MEETING

June 10, 2015

#### **MEMBERS PRESENT:**

Cooky Amarel, Cheryl Gaines, Wendy Cockrell, Margaret Rehmann, Carleen Hagen, Kim Buzolich, Ginger Benham, Diana Tatro, Dee Jagerhorn, Nancy Wilson, Valerie Wilson, Pat May, Joann Thomas, Jody Ohrt, and Diane Leighton.

#### **CALL TO ORDER:**

The meeting was called to order at 12:05 pm by President Cooky Amarel at the new meeting location at 1624 Starr Drive, Yuba City.

#### **SECRETARY:**

A motion was made and seconded (Jagerhorn/Cockrell) and unanimously voted to dispense with the reading of the minutes of the May 13, 2015 Board Meeting. A correction was noted that the discussion held on the Block of the Quarter and the fact that no decision was made was left out of the minutes. A motion was made and seconded (Cockrell/Jagerhorn) and unanimously voted to approve the minutes as corrected. A letter received from Casa de Esperanza was read.

They are requesting bed and crib quilts for their facility. It was decided to discuss this matter at a later date.

#### **TREASURER:**

The Checking Account has a balance of \$1,469.86 and the Savings Account has a balance of \$25,562.38. A motion was made and seconded (Cockrell/Jagerhorn) to transfer \$500 from savings to checking to cover the cost of speakers until the end of June 2015. Wendy announced expenses must be turned in by June 30, 2015 in order to be processed. She also announced that all money received for next year's membership dues will not be deposited until after June 30, 2015.

#### **UNFINISHED BUSINESS:**

Pat May and Cooky will talk to the manager at the storage unit to see if the Guild can possibly secure an end unit at no charge to hold the boxes of old records that need to be kept. Diane Leighton volunteered to chair the Fair Staffing position. The fair theme for this year's fair is "Where Fun Grows" and will run from Thursday, July 30, 2015 to Sunday, August 1, 2015.

Diane will be taking sign-ups at the June general meeting for volunteers to work the fair. Fair set-up will be July 21st at 9:30 am. Entry forms are due July 1st. Last year's fair quilt was never picked up by the winner, so it was decided to sell tickets at \$5 apiece to the membership at the July, August, and September meetings and then raffle it off at the September meeting. Money raised from this raffle will be used to purchase a microphone system for the Guild.

#### **NEW BUSINESS:**

After a discussion regarding the Guild's Library and the fact that so few people use it, it was motioned and seconded (Cockrell/Jagerhorn) to close the Library. It was also motioned and seconded (Nancy Wilson/May) to donate the books to the Gridley Library for their book sale. The Guild's policy regarding e-mail was discussed. A motion was made and seconded

*... Minutes continued on next page*

***minutes continued. . .***

(Gaines/Rehermann) that all e-mail and newsletter articles must be approved by the Executive Board prior to submission. A motion was made and seconded (Rehermann/Cockrell) to discontinue the book giveaway at the end of the monthly meetings. After a discussion over the concern of the small number of members taking Guild classes and the cost of putting on the classes, it was motioned and seconded (Gaines/Jagerhorn) to raise the cost of classes from \$25 to \$30 effective August 1, 2015. It was also motioned and seconded (Gaines/Cockrell) to reserve the right to cancel classes 30 days prior to the class if there is less than ten people signed up. Block of the Quarter was discussed for the 2015-2016 year. It was motioned and seconded (Ohrt/Jagerhorn) not to purchase fabric for the program. Patterns only will be provided in the newsletter and members will use their own choice of fabric. The rationale being to avoid having all the quilts look the same. It was also decided that in January members will vote on only completed quilts from the Block of the Quarter. Only the top vote getter from both color palettes will be able to be entered in the Quilt Show. This again is to avoid a lot of quilts looking the same.

**COMMITTEE REPORTS:**

It was announced that DeRay Jensen will be the Quilt Show chairman for 2017. Jody Ohrt showed the pins that are now available for the Totally Me Club and the 310 Club. One pin only and a certificate for each quilt that meets the requirements for these clubs will now be awarded to members. Any website changes or additions need to be submitted to Ginger Benham. The interim budget will be used for July and the 2015-2016 budget will be discussed in August.

General Meeting: Wednesday, June 24, 2015 at 7:00 pm Board Meeting: Wednesday, July 8, 2015 at 3:30 pm.  
(Note time change)

The meeting was adjourned at 1:35 pm

Respectfully submitted,  
Margaret Rehermann



## *Membership*

Well, it's on to a new year. Welcome 2015-2016. Can you believe it? It's time to renew your membership in this great organization to which we all belong. Where else can you have the opportunity to hear wonderful speakers, take classes from them at a fraction of what they are worth and make some of the greatest friendships with people you may have never had the opportunity to meet? And all this at just \$20.

I have revised the membership form to make it a lot simpler. Not so much to fill out. We only need one phone number. Just give us the one you prefer us to use. We are asking you to write your email address two times.

Sometimes it's hard to read and it gives us two chances to get it right. Of course we would be thrilled if you would let us know if you are interested in helping by becoming one of our chairmen. There are always jobs to do and just because someone has been doing it doesn't mean they wouldn't like a break. Sometimes they would like to try something different so let us know.

We also ask you to go on our web site and print your membership form. It saves the guild money not to have to print so many copies. We will have a limited supply for those that don't have Internet access. I won't be at this month's

meeting but the Gridley girls will be there to take care of you. If they don't have answers they'll let me know and I'll get back to you.

Delaina Watson

Membership Chairman





# Susan's Quilting Room

Quilting, piecing, teaching

Susan Bivins

171 Nebraska Drive  
Yuba City, CA 95991

susansquiltingroom@comcast.net

530) 870-8918 hm, 707)357-3839 cell

Classroom, instructions, mini retreats

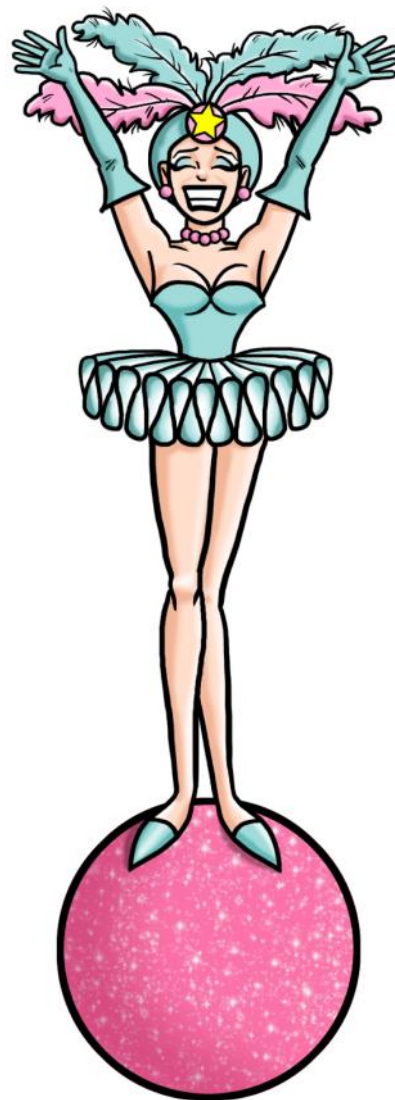


**Providing Healthy Products to our Community**

**GIFT OUTLET**  
Across from Sam's Club in Yuba City  
**1-800-447-5218**  
**or 751-5327**  
www.sunsweet.com  
**Mon - Fri 8-4**

We Ship For You

New Items Arriving Daily





## *Affiliate Members*

### **BRADLEY QUILT CO.**

Jim & Roxi Bradley  
17075 Kirkland Drive  
Cottonwood, CA 96022  
530-347-4438  
[roxanna@bradleyquiltco.com](mailto:roxanna@bradleyquiltco.com)  
[www.bradleyquiltco.com](http://www.bradleyquiltco.com)

### **LINDA BALLARD & CO**

22526 Bridlewood Lane  
Palo Cedro, CA 96073  
Linda Ballard  
530-547-3461  
530-547-2061 (Fax)  
[linda@letsquilt.com](mailto:linda@letsquilt.com)  
[www.letsquilt.com](http://www.letsquilt.com)

### **QUILTS BY CATHY**

1369 Barry Road  
Yuba City, CA 95993  
530-671-6047  
[quiltsbycathy@comcast.net](mailto:quiltsbycathy@comcast.net)  
[www.quiltsbycathy.net](http://www.quiltsbycathy.net)

### **SEW-SO-SHOP**

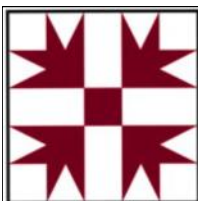
787 Plumas Street  
Yuba City, CA 95991  
Jim and Nicky  
530-742-7626  
[sewsoshop@att.net](mailto:sewsoshop@att.net)  
[www.sewsoshop.com](http://www.sewsoshop.com)

### **SUSAN'S QUILTING ROOM**

171 Nebraska Drive  
Yuba City, CA 95991  
H: 530-870-8918  
C: 707-357-3839  
[susansquiltingroom@comcast.net](mailto:susansquiltingroom@comcast.net)

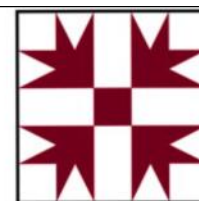
### **FRIENDS AROUND THE BLOCK**

433 Market St.  
Colusa, CA 95932  
Carol Lindquist  
530-458-7467  
530-933-8453  
[www.friendsaroundtheblock.com](http://www.friendsaroundtheblock.com)



## *Friends Around the Block Quilt Shop*

433 Market Street, Colusa, CA  
530-458-7467



### *Small town shop, big city selection*

*Come see our large selection of quality quilting fabrics,  
notions, & more, and meet owner Carol Lindquist and  
our friendly staff.*

*We also have in-shop Longarm Services available.*

*Open Monday - Friday 10 to 6, Saturday 10 to 4*

*Visit us on Facebook  
or at [www.friendsaroundtheblock.com](http://www.friendsaroundtheblock.com)*

## **Wendy Cockrell** Longarm Quilter



**Edge-to-Edge Meander  
Pantographs  
Custom Quilting  
Special Orders/Requests**

**(916) 803-2713 cell**  
**[capitolcityquilts@gmail.com](mailto:capitolcityquilts@gmail.com)**



**Officers and Chairpersons for 2014-2015****President**

Cooky Amarel 673-6653

**Vice-President**

Claire Poole 671-2165

**2nd Vice-President**

Cheryl Gaines 671-7562

Secretary Linda Matsumoto 671-7413

Treasurer Wendy Cockerell 916-803-2713

Parliamentarian Margaret Brazelton 673-6653

**Chairpersons**

2015 Quilt Show Wendy Cockrell 916-803-2713

2016 Quilt Show Wendy Cockrell 916-803-2713

2015 Opportunity Quilt Delaina Watson 682-8427

Book Give-Away Cathy Evans 671-6047

Challenge 2015 Dorothy Lindsay 846-0421

Christmas Party Wanda Horn 743-6805

Carolyn McCray 743-3205

Community Service Dee Jagerhorn 701-5410

Facilities Carleen Hagen 674-9026

Fair Staffing Carleen Hagen 674-9026

Fair Block Contest Nancy Wilson 741-0293

Fair Liason/Setup Valerie Wilson 742-1765

Hospitality Dorothy Lindsay 846-0421

Membership Delaina Watson 682-8427

NCQC Sharon Easter 671-7566

Newsletter Kim Buzolich 790-7180

Property Pat May 674-2930

Publicity, Guild Diana Tatro 674-3864

QGNC Sharon Easter 671-7566

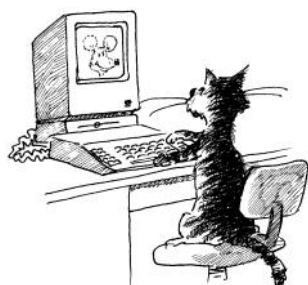
Sargeant @ Arms Joann Thomas 673-4416

Sew Day Dee Jagerhorn 701-5410

Sunshine Brenda Reeves 673-7637

310 Club Jody Ohrt 743-0329

Webmaster Ginger Benham 674-5943

*VQG Info***Purpose:**

To contribute to the knowledge of quilting, to promote the appreciation of fine quilts, to encourage quilt making and collecting and to contribute to the growth and knowledge of quilt techniques, textiles, patterns, history and quilt makers through educational meetings and fellowship.

**Meetings:**

Meetings are held the last Wednesday of each month at 7:00 p.m. at the Cal-Trans Building at 703 B St. in Marysville. Doors open at 6:15 p.m. Copy ready submissions to the newsletter are **due the by the 7th day of the month by 5:00 p.m. to the**

**Newsletter person.** Please direct any questions or comments to the Yuba-Sutter Valley Quilt Guild, P. O. Box 1463, Yuba City, CA 95992. Web site: [www.valleyquiltguild.com](http://www.valleyquiltguild.com)

**Membership:**

Membership is open to anyone interested in quilts and quilting regardless of skill level. You are urged to join and learn with us. Dues are \$20.00 payable annually. Membership is from July 1 through June 30. Membership entitles you to a newsletter, to an annual membership roster (which is confidential), and to the use of the library of quilt books, patterns and stencils. Affiliate membership fee is \$24.00 with a business listing each month. Affiliate members receive 10% discount for paying a year of ads paid in advance.

Submit to:

**Valley Quilt Guild****P. O. Box 1463****Yuba City, CA 95992.***Advertising Rates*

Advertising Rates Per Month	Members/Affiliate Members	Non-Member
Business Listing	Free	N/A
Business Card Ad	\$5	\$10
Quarter Page	\$10	\$20
Half Page	\$15	\$30
Full Page	\$20	\$40